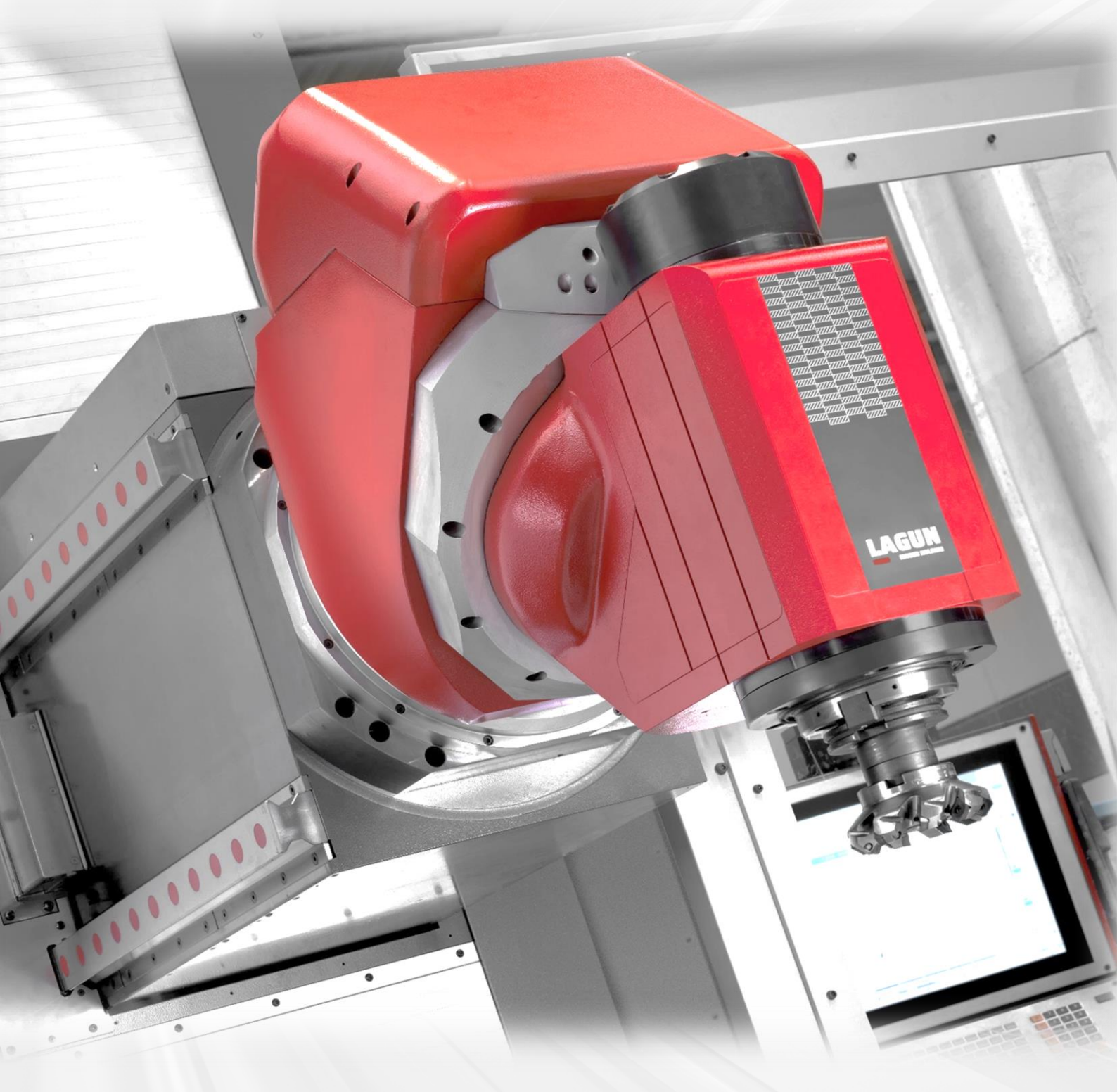


# In Stock

New CNC Universal Bed Mills, Horizontal Borers and Vertical Lathes,  
in stock, in build and ex-demo.



The **BIG** Machine Company

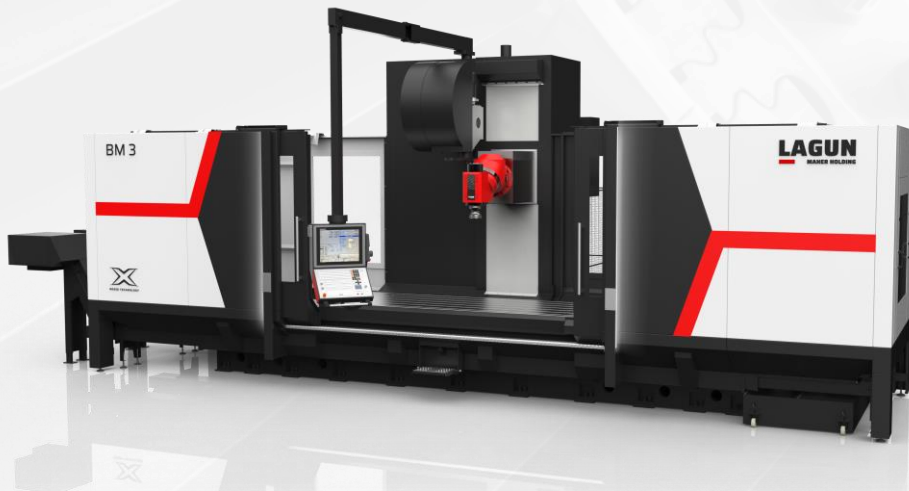


Winter 2024 Edition



**Universal Bed Mills**  
**2 – 8 weeks from Spain.**

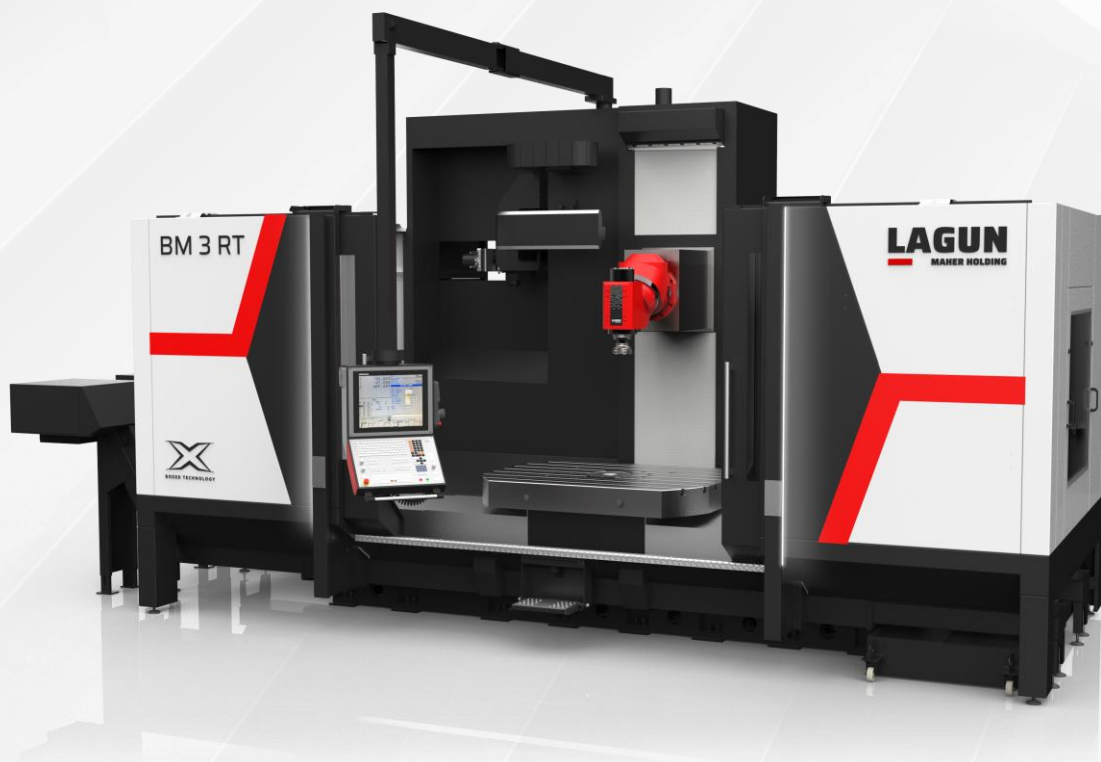
**LAGUN**  
MAHER HOLDING



**3 and 4 Metre Travelling table universal bed mills.**

BM 3 - X3,000 x Y1,300 x Z1,500mm travel  
BM 4 - X4,000 x Y1,300 x Z1,500mm travel  
Choice of programmable universal head  
Spindle Power 38kW  
X,Y,Z Heidenhain linear scales  
20 Bar Coolant plus air pressure option  
24 Tool magazine

**Lagun BM 4 – In Stock and ready to ship**



**3 Metre Universal bed mill with rotary table.**

Travel - X3,000 x Y1,300 x Z1,500mm  
Table - X1,600mm x 1,200mm 0.001° rotary  
Choice of programmable universal heads  
Spindle Power 38kW  
X,Y,Z Heidenhain linear scales  
20 Bar Coolant plus air pressure option  
40 Tool magazine

**Lagun BM 3 RT - New 2024 Guarding**  
**In build for Jan 2025 delivery**



Click or scan QR code for more information on Lagun range.

**Vertical Turning / boring from You Ji.**  
**The worlds largest VTL manufacturer.**  
**Popular models always in build.**



### **1,200mm and 1,600 dia. Table Vertical Lathes with C Axis**

Table Dia:	1,200 / 1,600mm
Max Swing:	1,600 / 2,000mm
Max Turn:	1,350 / 1,800mm
Max Turn Height:	1,200mm
Max Weight:	5,000 / 8,000Kg
Main Spindle:	45KW
Live Spindle:	11KW

**You Ji VTL 1200 ATC+C – 20 Weeks**  
**1,000mm / 1,200mm / 1,600mm tables**  
**Available 16 - 20 Weeks**



### **2,000mm dia. Table Vertical Lathe with C Axis**

Table Dia:	2,000mm
Max Swing:	2,500mm
Max Turn:	2,300mm
Max Turn Height:	1,600mm
Max Weight:	10,000Kg
Main Spindle:	75KW
Live Spindle:	15KW / 26KW

**2,000mm tables**  
**Available 26-30 Weeks**



Click or scan QR code for more  
information on You Ji range.

Heavy Duty and high-speed machining centres from Taiwan.

**kafo**



**Massive 5m x 5m Double Column machining centre with programmable head**

Travel: X5,100 x Y5,200 x Z1,000mm  
Spindle Power: 26kW (37KW available)  
Max Table load: 20,000Kg  
X,Y,Z Heidenhain linear scales  
Choice of programmable heads

**Kafo RV-5152  
In Stock, ready to ship.**



**Double Column machining centre with manual or programmable head**

Travel: X3,100 x Y1,800 x Z900mm  
Spindle Power: 26kW (37KW available)  
Max Table load: 9,000Kg  
Choice of manual heads

**Kafo 2 and 3 metre double column.  
Choice of manual or programmable head.  
Only 90 days to build and ship.**



**Full Range of Vertical Machining Centres**

Heavy Duty with Gearbox or High-Speed Direct Drive Spindles.  
Fanuc, Heidenhain or Siemens controls.

**Most 800mm, 1,000mm and 1,300mm models available from stock, larger machines, only 90 days to build.**



Click or scan QR code for more information on Kafo range.



## 100mm spindle, entry level table type horizontal borer.

Travel:	X1,800 x Y1,100 (Vertical) x Z940mm, W710mm
Spindle Power:	35kW
Spindle Speed:	Up to 2,500rpm
Max Table load:	3,000Kg
Table	1,000mm x 1,120mm

Regular machine in Tos build program for stock or short delivery.



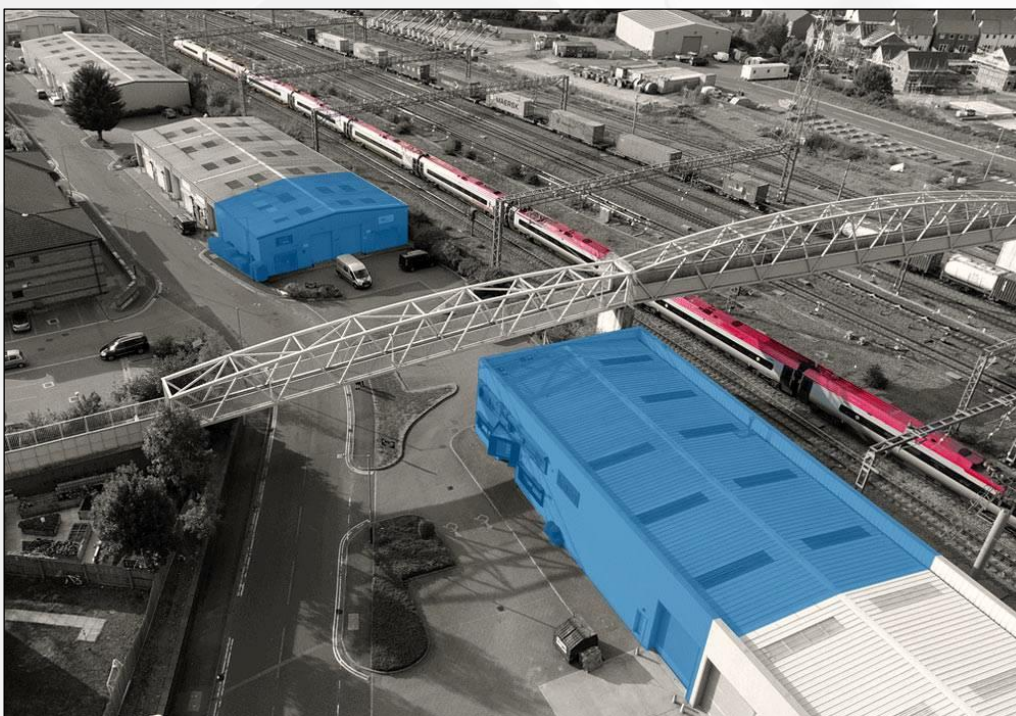
## 105mm spindle, entry level table type horizontal borer.

Travel:	X1,800 x Y1,250 (Y1,600) x Z1,000mm W630mm
Spindle Power:	35kW
Spindle Speed:	Up to 4,000rpm
Max Table load:	5,000Kg
Table	1,400mm x 1,600mm

Regular machine in Tos build program for stock or short delivery. Many options still available during build.



Click or scan QR code for more information on Tos Varnsdorf range



TDT Machine Tools Limited, headquartered in the heart of the country at Rugby, Warwickshire, is the official UK & Ireland importer, sales distributor, and service agent for a range of CNC machine tools from Lagun, Kafo, You Ji, Feeler, Tos Varnsdorf, Feeler and the German Machine Tool Group (GMTG).



TDT Machine Tools

Unit 20, Woodside Park, Rugby, Warwickshire, CV21 2NP

